

PLAY ON!

ANTAEUS

Theatre Company.

A NEW HOME FOR THE ARTS IN GLENDALE



ANTAEUS IS...

- A cooperative theatre ensemble founded to empower the actor and bring classical theatre to Southern California. The company exists to create a family of artists and audiences and is dedicated to exploring stories with enduring themes.

- A company whose local and national reputation has attracted some of California's most talented actors – people you have seen in film, television, and on Broadway, whose training is rooted in the classical theatre.

- Dedicated to excellence in the performance of the written word. We challenge and inspire our community through storytelling that is visceral and immediate.

- Acknowledged for quality. Antaeus wins local and regional awards and is regularly featured in critics' best lists, including the Los Angeles Times' Best Stage Shows for 2014.

- Devoted to the ongoing development and growth of artists and audiences. We nurture an environment where artists can risk failure in the pursuit of greatness.

- Committed to the idea that learning never ends. We train ourselves, future artists, and our community.

- Cramped for space. With three productions each year, a ClassicsFest reading series, the Antaeus Academy, the Antaeus Playwrights Lab, Salons and our active Classics Library – all in a 49-seat theatre with limited office and gathering space – we're bursting at the seams.



ANTAEUS DOES...

• PRODUCTIONS •

From Shakespeare to Miller, from Chekhov to Coward - Antaeus produces three fully staged plays each season.

• CLASSICS LIBRARY •

It all begins in the Classics Library (housing 6,500 plays), where company members identify a possible play, which undergoes intensive reading and discussions before it is scheduled for a public reading or discussion.

• CLASSICSFEST •

Antaeus' popular play reading series, ClassicsFest is free to the public and allows audience members to get a close and personal look at how actors approach their work.

• SALON SERIES •

A series of roundtable discussions focusing on various aspects of upcoming productions. These intimate (15 people) discussions are moderated by leading theatre artists and experts.

• THE ACADEMY •

Mastering the acting challenges of great classics takes a lifetime. Over 200 student actors enroll in a variety of classes each year, working with seasoned professionals so that skills become second nature.

• THE ANTAEUS PLAYWRIGHTS LAB •

Founded with the goal of creating new classics, company actors collaborate with playwrights on a weekly basis to develop new work including an annual ten minute play festival.

• EDUCATION PROGRAMS •

Long-term residencies with area schools, where at-risk students connect with Shakespeare's at-risk characters; teaching artists' visits to community groups and schools; post-show discussions and potlucks with artists; and Classics Forums, roundtable study sessions with Antaeus actors. Through our education programs we connect modern youth to the universal truths of the classics.



IN OUR NEW HOME, ANTAEUS CAN GAIN...

• TWO PERFORMANCE SPACES •

In our new home in Glendale, we will have both an 80-seat and a 45-seat performance space. We will be able to accommodate a larger audience and present additional plays and readings each year.

• LIBRARY AS A PUBLIC RESOURCE •

With more space for meetings and rehearsals, we will make our library available to students and adults who wish to have access to our extensive collection of plays and theatre histories.

• INCREASED ACADEMY •

The number of Academy classes has reached its limit due to space capacity. With more room we can increase this important service and source of revenue.

• EDUCATION PROGRAMS •

In addition to our long-term commitments to William Tell Aggeler Opportunity High School and other schools - when we are in Glendale we can create a strong relationship with the Glendale Unified School District - with actors onsite in the schools and subsidized tickets for students. We also plan to host a reading series in the Glendale library.

• NEW FRIENDS •

A site across from one of the region's best shopping areas - The Americana at Brand and the Glendale Galleria - will allow Antaeus to be in the flow of new potential theatregoers (And to bring our audience new dining and shopping opportunities, as well.)

• PARKING AND TRANSIT •

Our location will be more convenient for our audience, situated directly by a bus line, with excellent nearby parking options.



WHY IS THIS IMPORTANT?

It's about our name...

In Greek mythology, Antaeus was a demigod, who derived his strength from touching the ground. As long as he could touch the ground, he could not be defeated. For the Antaeus company, this “grounding” has a dual meaning.

The importance of classical theatre is reminding a modern audience of universal truths. And the importance for great actors to touch the ground of their artistic craft - the living stage - in order to keep their strength.

It's about the community...

Antaeus has a loyal audience from around Southern California - in fact, we attract more people aged 20-35 than most other classical theatres because of our artists and our educational activities. Our audience is multilingual and multicultural, and our work attracts people from all walks of life - doctors, lawyers, teachers, students, and even science fiction fans.

In Glendale, we can join a thriving arts and leisure scene, by adding a classical theatre component that isn't currently available in the community.

It's about the kids...

Antaeus has a committed relationship with our partner schools now, but in Glendale with more space, we can deepen and broaden our reach to encourage the understanding and love of classical theatre among our coming generation of leaders.

The lessons we can learn from Shakespeare, Saroyan and Cervantes illuminate how we can navigate the thorny problems life brings us. Our work helps inform and inspire the future leaders of our community.

It's about the training...

We all stand on the shoulders of those who came before us. This is as true in the performing arts as in any other field. Antaeus is training the next generation of great actors right now. And in our expanded space, we can do so much more.



WHAT WILL IT TAKE TO MAKE THIS HAPPEN?

Antaeus has signed a 10-year lease for our new home in Glendale, an ideal location at 110 E. Broadway, just across from the famous Americana at Brand and in the heart of a growing, thriving arts and entertainment district. The company will have the option to renew the lease every decade for an additional 40 years! So we would be making a long-term commitment to Glendale, just as Glendale would be making to us.

TOTAL CAMPAIGN \$3 MILLION

- **\$1.8 million**

CAPITAL Getting us into our new home, from renovation, to branding, to furniture

- **\$1.2 million**

Support the work in our new home, and help us fund three years of productions, arts education, community outreach, audience development, and operations.



6,500
books in our library

49

seats in the
current
theatre

125

seats in two
spaces in
Glendale

in 365 days, we spend:

207 days rehearsing

197 days performing

137 days in class



200
student actors in
the Academy



50
early career actors
in the ensemble



150
classical actors looking
for a new home

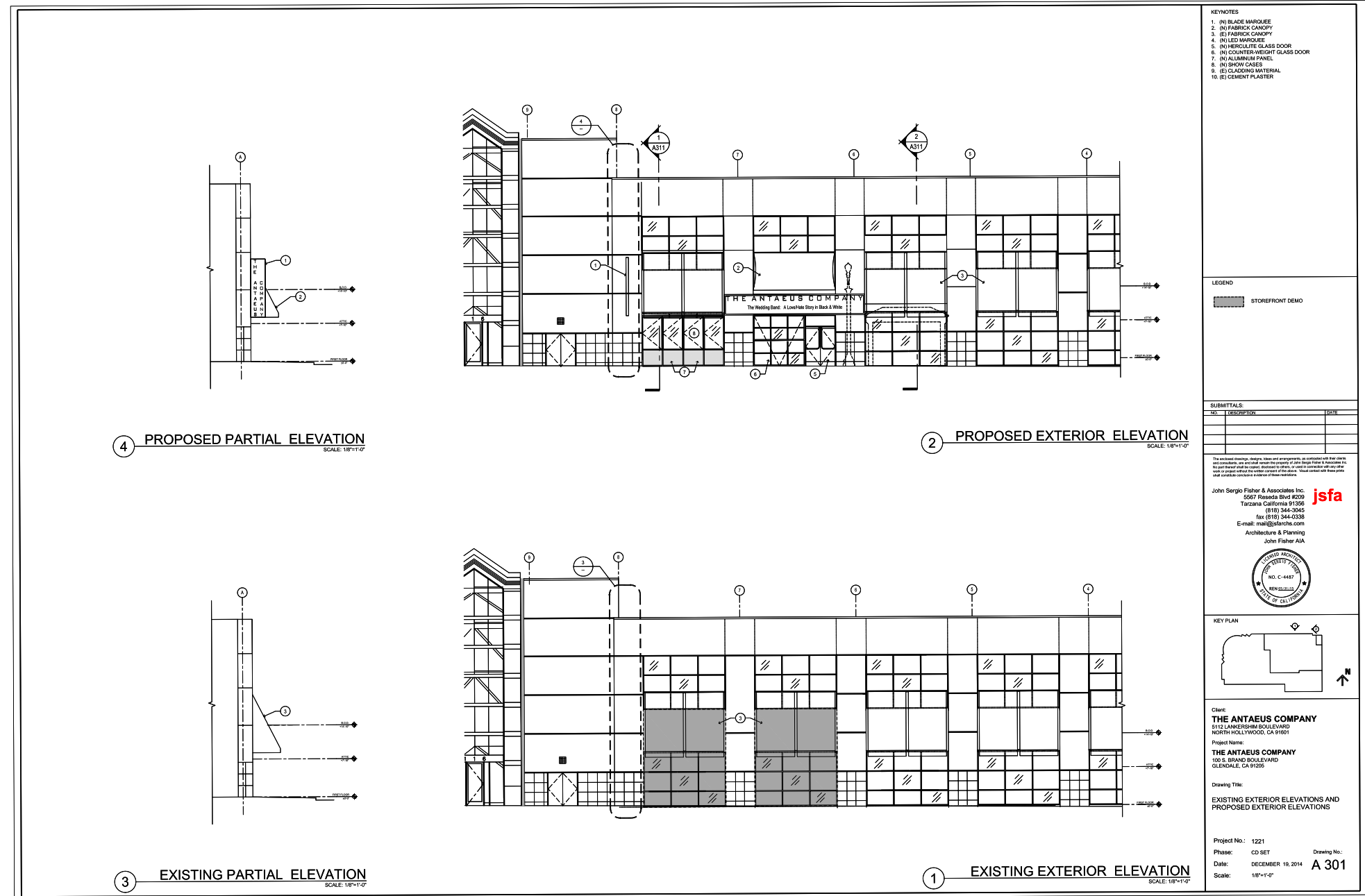
ANTAEUS BY THE NUMBERS

As you see, Antaeus does a lot with a little. In our new home, think how much we can do with just a little more!

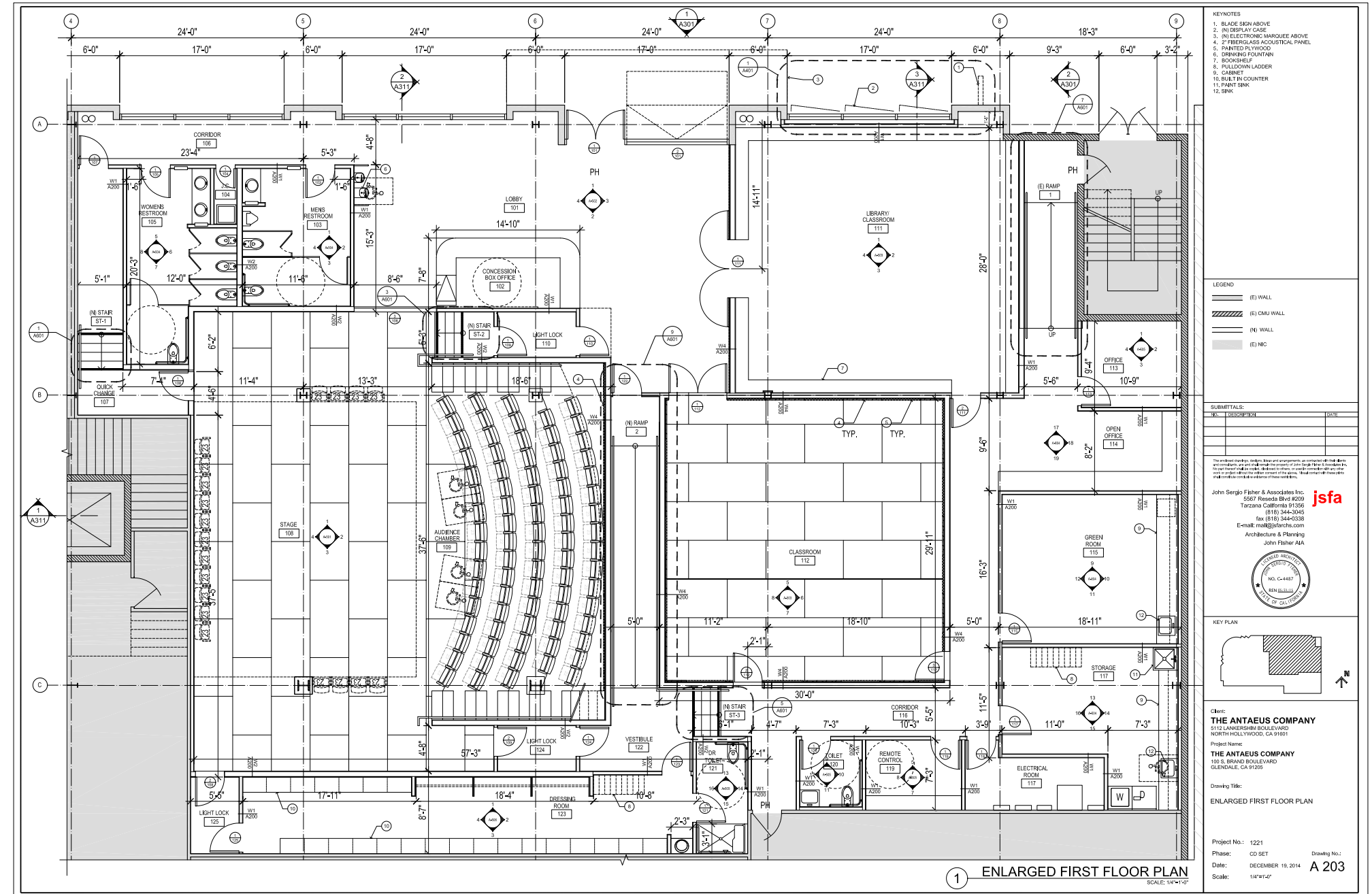
Want to know how you can help?

Email Courtney Robertson, Development Manager, at Courtney@antaeus.org

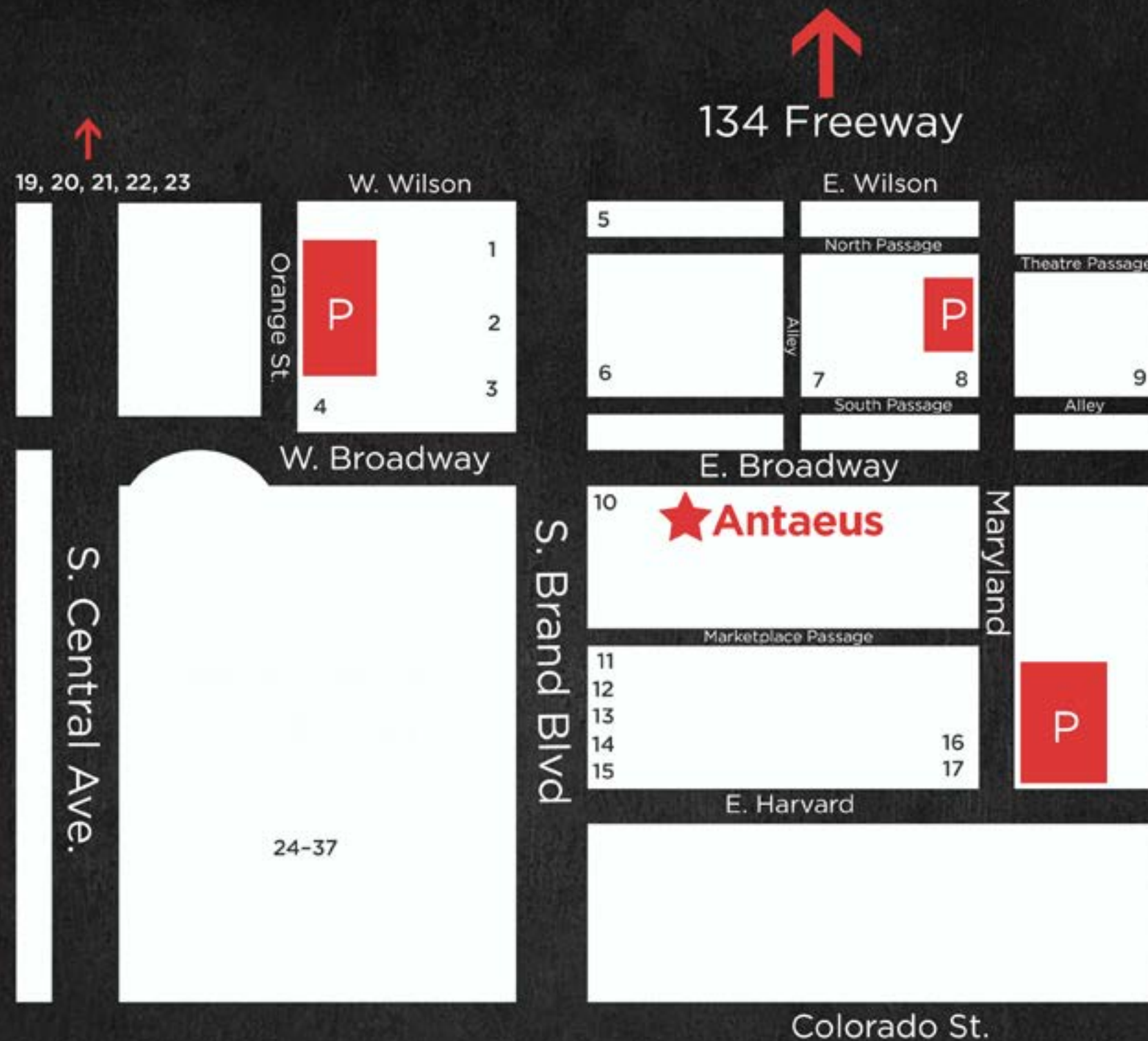
EXTERIOR PLAN



FLOOR PLAN



OUR NEW NEIGHBORHOOD



1. California Pizza Kitchen
2. La Goccia Espresso Bar
3. B.J.'s Restaurant
4. Islands Fine Burgers
5. Panda Inn
6. Pierre Garden
7. Urartu Coffee
8. Octopus
9. Raffi's Place
10. Joon Shabu Shabu
11. Rayhun Sandwiches
12. Ichiban Japanese Restaurant
13. The Famous Bar
12. India's Flavor
14. Brand158
15. Mediterranean Delight
16. Sushi Kai
17. Left Coast Wine Bar
18. Foxy's
19. Conrad's (24hr)
20. Hong Kong Kitchen
21. Thai Rama
22. Tiffany's Coffee
23. Starbucks

IN THE AMERICANA:

24. Bourbon Steak by Michael Mina
25. Chi Dynasty
26. CrepeMaker
27. Din Tai Fung
28. Frida Mexican Cuisine
29. Granville Café
30. Jersey Mike's
31. Le Pain Quotidien
32. Napoleon's Macarons
33. Potato Corner
34. Project Pie
35. The Cheesecake Factory
36. The Melt
37. Trattoria Amici

IN THE GALLERIA:

38. 9021 Pho
39. Blaze Pizza
40. earthbar
41. La Baguette
42. Lette Macarons
43. Red Robin



antaeus.org